

EZ Heart

By Kim Lembke, Oct 2016

Angles for R.I. = 1.760

25 + 9 girdles = 34 facets

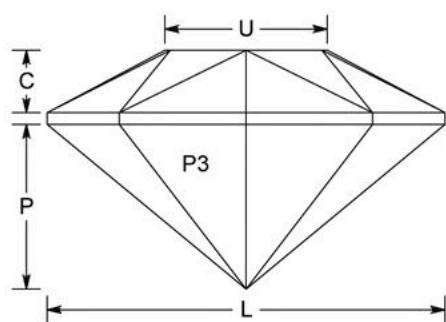
1-fold, mirror-image symmetry

96 index

L/W = 1.056 T/W = 0.466 U/W = 0.431

P/W = 0.437 C/W = 0.166

Vol./W³ = 0.202

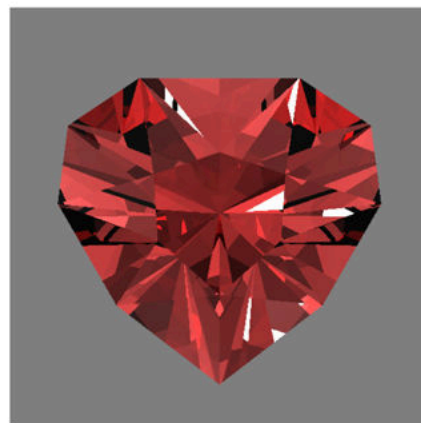
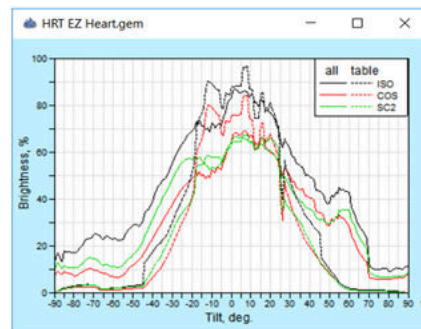


PAVILION

P1	39.67°	26-70	Cut to CP
P2	40.50°	39-57	Cut to CP
P3	44.62°	10-86	Cut to CP
P4	44.73°	16-80	Cut to CP
P5	44.73°	48	Cut to CP
P6(G)	90.00°	10-86	Establish girdle line
P7(G)	90.00°	16-80	Meet P3,P4,P6(G)
P8(G)	90.00°	26-70	Meet P1,P4,P7(G)
P9(G)	90.00°	39-57	Meet P1,P2,P8(G)
P10(G)	90.00°	48	Meet P2,P5,P9(G)

CROWN

C1	35.54°	10-86	Establish girdle width
C2	36.70°	16-80	Meet C1,P6(G)
C3	29.15°	26-70	Meet C2,P7(G)
C4	30.00°	39-57	Meet C3,P8(G)
C5	34.43°	48	Meet C4,P9(G)
C6	33.80°	11-85	Cut to meet girdle
C7	27.54°	23-73	Cut to meet girdle
C8	27.92°	43-53	Cut to meet girdle
T	0.00°	Table	Cut to meet C6,C7,C8



Designed as a simple heart for small rough